

Products Catalogues



Kuber Techno Craft

www.kubertechnocraft.com





PROFILE

We introduce ourselves as **KUBER TECHNO CRAFT** specialized in Commercial Kitchen, LPG Pipeline Installation, Hot Air Ventilation Hood & Ducting, Refrigeration Equipments, Utility Equipment (both Electricity and Gas Operated), Bakery, Food Processing, Laboratory Equipments & Kitchen Utensils, Pots and Pans for Hotel kitchen, Resort kitchen, Industrial kitchen, Hospital kitchen, and Embassies kitchen, kitchen of Armed Forces, Call Centers kitchen, Educational Institutions kitchen and complete range of kitchen equipment & Utensils. We are fully equipped to cater to any volume of kitchen requirements in this regard, with the assurance of best quality workmanship.

We work with our clients to find solutions to their specific kitchen needs and we understand the importance and benefit of cultivating relationships, accessing, and incorporating cutting edge technology. **KUBER TECHNO CRAFT** thus offers a full range of kitchen services, coupled with a hands-on-approach, and a unique perspective on what it takes to get a job done-on time and within budget. Let our experienced streamline plan your kitchen equipment installation. The firm's diligent approach offers clients comprehensive cost effective and secure kitchen solutions to their most challenging situations for diversified products.

OUR VALUED CUSTOMERS

OUR ESTEEMED CUSTOMERS

SOME OF OUR CLIENTS...

NEITC
NORTH EAST TERN INDUSTRIAL & TECHNICAL CONSULTANCY ORGANISATION LIMITED

ROYAL SCHOOL OF ENGINEERING & TECHNOLOGY
* GYAN SAGAR FOUNDATION

HQ EAC (AF) MES - Shillong
HQ BSF, CRPF, ITBP, ASSAM RIFLES
JAT REGT., RAJPUTANA RIFLES
SIG. REGT.
*HOTEL BROADWAY,
*CITY HEART FAMILY DHABA,
SHILLONG

SAINIK SCHOOL, GOALPARA
*North Eastern Police Academy (N.E.P.A.)
*Hotel Regency, Alzawl, Mizoram
*Niasthu Group of Hotels & Resorts, Hotel Tragopan, Nagaland
*Hotel Pine Ridge, Subansiri, ABC Restaurant, BCP Society, Arunachal Pradesh
*Hotel Classic, Hotel Nirmala, Imphal
*Hotel Overseas Mansion, Agartala, Tripura

CAU, TURA
INDIAN INSTITUTE OF TECHNOLOGY, GUWAHATI

International Hospital
*Jorhat Medical College
*St. JOHNS HOSPITAL, GUWAHATI
*4B Satribari Christian Hospital
*Shillong Club
*Indian Institute of Information Technology Guwahati (IIITG)

INSTITUTE OF HOTEL MANAGEMENT CATERING TECHNOLOGY & APPLIED NUTRITION SHILLONG & GANGTOK
*FOOD CRAFT INSTITUTE, TURA
GOVERNMENT OF MEGHALAYA

DEFENCE RESEARCH & DEVELOPMENT ORGANISATION

NSIC

AIR CHEF PRIVATE LIMITED

IRCTO

NTPC

SOS CHILDREN'S VILLAGE

CENTRAL INSTITUTE OF PSYCHIATRY, KANKE, RANCHI

Reserve Bank of India

The Gauhati High Court

CLARKSON'S EXCELLENCE

DOSA PAPA

NTPC

MARUTI SUZUKI

the yellow chilli

Food Craft Institute

GAIL (India) Limited

sodexo
Quality of Daily Life Solutions

CLASSIC HOTEL

SUZUKI

PRISM CEMENT

MAX HEALTHCARE
Caring for you... for life.

Dabur

JIVA VEG Restaurant

JIVA SIZZLER

JIVA ORCHID RAIN IN FOREST RESORT

Fortis

brajaj auto ltd

Metro Hospitals & Heart Institute

Apollo

Bongaigaon Refinery

ASIDC

KIDZEE

WAIL INTERNATIONAL HOTEL

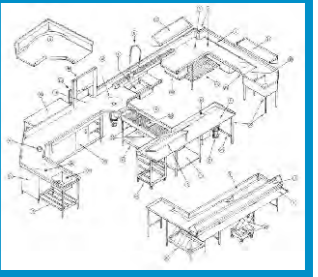
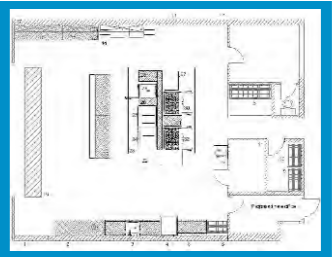
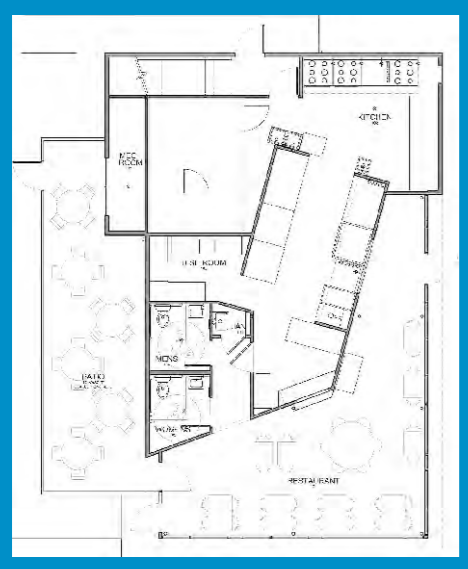
etc....

BRW ASSOCIATED INTERNATIONAL PARTNER

 COMMERCIAL KITCHEN EQUIPMENT	 Master of Performance	 COMMERCIAL FOOD SERVICE EQUIPMENT	 INDUCTION EQUIPMENT	 TRUSTED FOR GENERATIONS™ FOOD PROCESSING MACHINE	 FOOD PROCESSING MACHINE
 KARMA GLOBAL LTD. COMMERCIAL KITCHEN EQUIPMENTS	 COMMERCIAL KITCHEN EQUIPMENTS	 FOR THE WAY IT'S MADE! STAND MIXERS	 COMMERCIAL BLENDER	 WOOD FIRED OVENS	 COMMERCIAL CONVEYOR PIZZA OVENS
 COMMERCIAL GLASS / DISH WASHERS	 COMMERCIAL DISH WASHERS	 Solid equipment. Sound advice. PROFESSIONAL COOKING AND CATERING EQUIPMENT	 PROFESSIONAL COOKING AND CATERING EQUIPMENT	 PROFESSIONAL COOKING AND CATERING EQUIPMENT	 BEVERAGE FOOD SERVICE EQUIPMENT
 COMMERCIAL COMBI-STEAMERS	 COMMERCIAL JUICERS	 COMMERCIAL FOOD WORMER & TOASTERS	 COMMERCIAL KITCHEN EQUIPMENT	 ESPRESSO COFFEE MACHINES	 COMMERCIAL KITCHEN EQUIPMENT
 Think espresso	 complete washing solution	 catering equipment			
		 Supporting your success	 Since 1989	 Rotary Rack Ovens	



kitchen





SINGLE BURNER RANGE (Gas)



TWO BURNER COOKING RANGE



THREE BURNER RANGE (Gas)



FOUR BURNER COOKING RANGE



FOUR BURNER RANGE WITH OVEN (Gas)



SIX BURNER COOKING RANGE



SIX BURNER COOKING RANGE WITH OVEN (Gas/Electric)



CHINESE COOKING RANGE (Gas)



DOSA PLATE



CHINESE CUM INDIAN COOKING RANGE



CHARCOAL GRILL (Electric/Charcoal/Gas)



TABLE TOP SINGLE CHINESE BURNER



TILTING BULK COOKER (Gas/Electric)



TILTING BRAZING PAN (Gas / Electric)



DOUBLE DEEP FRYER (Gas/Electric)



CHAPATI CUM PUFFER PLATE



STEAM COOKING VESSELS WITH STEAM GENERATOR (Gas / Electric/Diesel)



IDLE -MOMO STEAMER HIGH SPEED



PASTA COOKER (Gas/Electric)



TABLE WITH ONE UNDER SELF



WORKING TABLE WITH TWO UNDER SHELF



WORK TABLE WITH 2US & 1OS



WORK TABLE COUNTER



TABLE WITH SINK



WORK TABLE WITH SINK UNDER SHELF



WORK TABLE WITH UNDERSHELF & 2 OH SHELF



WET GRINDER



TILTING WET GRINDER



PULVERIZER



POTATO PEELER



VEGETABLE CUTTING MACHINE



COCONUT SCRAPER



DOUGH/ATTA KNEADING MACHINE



DOUGH KNEADER



WET GRINDER DOMESTIC



COMMERCIAL MIXER GRINDER



MIXER GRINDER WITH 3 JAR 900W



MIXER GRINDER WITH 3 JAR 1200W



MIXER GRINDER WITH 2 JAR 1600W



SHAKES LASSI MACHINE 100W



JUICE MACHINE ALUMINIUM BODY



JUICE MACHINE SS BODY



CARROT JUICER ALUMINIUM



JUICER INSTANT MANUAL



MASALA TROLLEY



MASALA TROLLEY



BAIN MARIE WITH TRAY SLIDE (Hot/Cold)



BAIN MARIE WITH SNEEZE GUARD & TRAY SLID (Hot/Cold)



TABLE TOP HOT BAIN MARIE



BAIN- MARINE TABLE TOP MODEL



BAIN MARINE - FOOD WARMER WITH TRAY RAIL



BAIN MARIE UNDERNEATH STORAGE



MILK TEA BOILER



HOT FOOD SERVICE TROLLEY



HOT FOOD SERVICE TROLLEY



FOOD PICK UP COUNTER



TEA SNACK TROLLEY



HOT DOG TROLLEY



LUGGAGE TROLLEY



LUGGAGE TROLLEY BRASS



CUTLERY SERVICE WITH TRAY SLIDE



LUGGAGE TROLLEY AIRPORT STYLE



FOOD PAN SERVICE TROLLEY



SS PLATFORM TROLLEY



SS UTILITY CART



SS LINEN TROLLEY



POT RACK / STORAGE RACK



LUGGAAGE TROLLEY OPEN TYPE BRASS



CLEAN DISH RACK PERFORATED



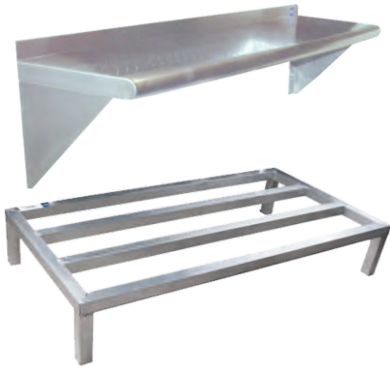
STORAGE & CLEAN DISH RACK (Perforated)



WALL MOUNTED STORAGE GLASS & CUP



STORAGE RACK POWDER COATED



WALL SHELF & DUNNAGE RACK



INGREDIENT BIN



SS CABINET/LOCKER



SS WALL CABINET



SS POTATO/ONION BIN



SS WORK TABLE WITH DRAWERS



SS WORK TABLE WITH DRAWERS



SOLID DISH LANDING TABLE WITH GARAGE HOLE



SOLID DISH TABLE WITH OH CRATE STORAGE RACK



SOIL DISLANDING TABLE



THREE SINK UNIT



SINGLE SINK UNIT WITH GARBAGE CRUSHER



POT WASH SINK



SCRUB STATION FOR OPERATION THEATER



THREE SINK UNIT WITH SIDE SPREADER



UNDER COUNTER DISHWASHER



HOOD TYPE DISH WASHER



CONVEYOR DISHWASHER



DISHWASHING UNIT



WATER COOLER



EXHAUST HOOD



ISLAND TYPE EXHAUST HOOD



EXHAUST FAN



AIR WASHER PLANT



CO-AXIAL FAN



CENTRIFUGAL BLOWER



FRESH AIR CENTRIFUGAL BLOWER UNIT



EXHAUST HOOD



LPG BANK PIPELINE



BLENDER STATION WITH SINK & TAP



COCKTAIL STATION WITH SPEED RAIL



BAR BLENDER



ICE CUBE MAKING MACHINE AND DRINK MIXER



DRAIN BOARD GLASS STORAGE UNIT



ICE CRUSHER MANUAL



TWO DOOR BACK BAR WINE CHILLER



THREE DOOR BACK BAR WINE CHILLER



GLASS WASHER



DINING TABLE WITH SEATERS



LAWA GRILL



TABLE TOP SINGLE INDIAN BURNER



COLD ROOM



ECO-CHULHA



TEA COFFEE DISPENSER



Dinning Table & Chair



WATER DISPENSER (HOT & COLD)



WATER DISPENSER (HOT, COLD & NORMAL)



VENDING MACHINE (MICRO)



café mini
2 LANE MACHINE



FLAMBE TROLLEY



PASTA /IDLI COOKER (Gas/Electric)



DEEP FREEZER



TEA COFFEE DISPENSER



DIESEL / KEROSENE BHATTI



TABLE TOP ELECTRIC FRYER

TABLE TOP GAS FRYER



GF-4/6/8/11SE

GF-4/6/8/11TE

EF-71

EF-72

TABLE TOP GAS/ELECTRIC FRYER

Model	Electric / Gas	Tank Volume	Power	Voltage	Weight	Dimensions
GF-4SE	Electric	4 liters	2000W	220V/50Hz/1PH	4,1 kg	217 x 400 x 320 mm
GF-6SE	Electric	6 liters	2500 w	220V/50Hz/1PH	5.2 kg	365 x 430 x 295 mm
GF-8SE	Electric	8 liters	3250W	220V/50Hz/1PH	6 kg	450 x 330 x 370 mm
GF-11SE	Electric	11 liters	3500W	220V/50Hz/1PH	7 kg	325 x 460 x 345 mm
GF-4TE	Electric	4 x 2 liters	2 x 2000W	220V/50Hz/1PH	8 kg	435 x 400 x 320 mm
GF-6TE	Electric	6 x 2 liters	2 x 2500W	220V/50Hz/1PH	9 kg	550 x 430 x 295 mm
GF-8TE	Electric	8 x 2 liters	2 x 3250W	220V/50Hz/1PH	12 kg	550 x 430 x 345 mm
GF-11TE	Electric	11 x 2 liters	2 x 3500W	220V/50Hz/1PH	15 kg	670 x 460 x 345 mm
EF-71	Gas	5.5 liters	LPG	-----	5 kg	290 x 470 x 470 mm
EF-72	Gas	5.5 x 2 liters	LPG	-----	9 kg	580 x 470 x 470 mm

CONVEYOR TOASTER



CT-100



CT-200/300

SLOT TOASTER



4ATS



6ATS

SLOT/CONVEYOR TOASTER

Model	Electric / Gas	Capacity	Power	Voltage	Weight	Dimensions
4ATS	Electric	4 Slice	2240W	220V/50Hz/1PH	6 kg	370 x 210 x 225 mm
6ATS	Electric	6 Slice	3240W	220V/50Hz/1PH	8 kg	460 x 210 x 225 mm
CT-100	Electric	150-180 Slice/H	1340W	220V/50Hz/1PH	20 kg	418 x 288 x 387 mm
CT-200	Electric	300-350 Slice /H	1940W	220V/50Hz/1PH	27 kg	416 x 368 x 387 mm
CT-300	Electric	450-500 Slice /H	2640W	220V/50Hz/1PH	35 kg	418 x 468 x 387 mm



SANDWICH GRILLER



- GH-811A (Top & Bottom Grooved) GH-813A (Top & Bottom Grooved)
- S/steel structure with heavy duty heating elements;
 - Temperature control with overload thermostat • Use European component

Model	GH-811A	GH-813A	GH-811E
Voltage (v)	220V	220V	220V
Power(kw)	1.8	3.6	3.6
Upper Grill (mm)	215x230x45	215x230x45x2	330x230
Lower Grill (mm)	241x230x65	495x230x65	356x230
Dimension (mm)	290x305x210	570x305x210	432x305x210
Temperature (°C)	300	300	300
Head	1	2	1



TABLE TOP GRIDDLE



- GH-821 (full ribber) GH-820 (full smooth)
- GH-818 (full Smooth) GH-822 (½ smooth, ½ ribber)
- All s/steel structure with compact design
 - High heating efficiency

Model	GH-818	GH-820	GH-821	GH-822
Dimension (mm)	550x450x230	730x500x230	550x450x230	730x500x230
Voltage (v)	220	220	220	220
Power (kw)	3	4.4	3	4.4



WAFFLE BAKER



- UWB-1 UWB-2
- S/steel structure with compact design • se imported components
 - Heavy duty heating elements with temperature control

WAFFLE BAKER

Model	UWB-1	UWB-2
Voltage (v)	220	220
Power(kw)	1	1 x 2
Temperature (°C)	124 - 230	124 - 230
Waffle plate (mm)	dia: 178	dia: 178
Dimension (mm)	250x380x300	500x380x300



CONE BAKER



- ZU-1 ZU-2
- S/steel structure with compact design;
 - With quality temperature control system,;

CONE BAKER

Model	ZU-1	ZU-2
Voltage (v)	220	220
Power(kw)	1	2
Surgace (mm)	dia: 210	dia: 210
Dimension (mm)	280x380x360	500x380x360





CONVECTION OVEN



YXD-1AE

- Body: 304 stainless steel (0.8mm)
- Convection heating system
- Inner box: ceramic
- 120 min timer
- Heavy duty elements
- European fan

CONVECTION OVEN

Model	YXD-1AE
Voltage (v)	220
Power (kw)	2.67
H/Element	2 Pcs.
Fan	2 Pcs.
Tray Size (mm)	438x315x10
Dimension (mm)	595 x 606 x 570
Interior Size (mm)	460 x 375 x 360
Weight (kg)	38
Temperature (°C)	50 - 300
Steam	Yes

DISPLAY WARMER



FWH-2P



DFW 55/110/165



VRGFW-1/2

Model	Voltage (v)	Power (w)	Dimension (mm)	Capacity Ltrs
DFW55	220	750	620x350x425	55
DFW110	220	1 kw	875x350x425	110
DFW165	220	1 kw	875x400x535	165
VRGFW-1	220	850	350x425x550	-
VRGFW-2	220	850	350x425x700	--

- Constant temperature Humidity preservation
- upper & lower layer can be equipped with orvit-rake or Fruit tray

DISPLAY WARMER

Model	FWH-2P
Voltage (v)	220 / 50Hz/1PH
Power (w)	1200
Dimension (mm)	660 x 500 x 620
Weight (kg)	28



PLATE & CUP WARMER



DR-2



DR-1



DR-3

- S/steel structure with compact design
- Energy saving design
- Quality elements with temperature control
- Four wheels are easy to move
- Dr-3 is drop to move

PLATE & CUP WARMER

Model	DR-1	DR-2	DR-3
Voltage (v)	220	220	220
Power (w)	400	800	400
Tube (Pcs)	1	2	1
Dimension (mm)	450X485X770	450X910X770	dia:405x725
Weight (kg)	31	48	19

SOUP KETTLE/ICE CRUSHER



TS-6000B



GT-6



- Powder coated surface (black)
- Rohs approval
- Packing dimensions: 350 x 350 x 390 mm

- Idea design with reliable quality
- Heavy duty industrial motor
- S/Steel blade
- Drawable collecting pan
- Easy operation

ICE CRUSHER

Model	GT-6
Unit Size (mm)	350x290x430
Power Supply (v)	220/50Hz
Electricity	3.5A
Circumgyrate (rpm)	1400
Power (w)	250
Production (kg/m)	1.8
Devotion (kg)	about 1.8
Weight (kg)	20

SOUP KETTLE

Model	TS-6000B
Voltage (v)	220 / 50Hz/1PH
Power (w)	400-475
Dimension (mm)	345 x 360
Weight (kg)	4.5





ELETRIC SALAMANDER



AT-936/937/938 EB-450/600/800

- S/steel structure with compact design
- Adjustable level control
- Quality heating elements with individual temperature Control

ELETRIC SALAMANDER

Model	EB-450	EB-600	EB-800
Voltage (v)	220	220	220
Power (w)	2800	4000	5600
Dimension (mm)	450X450X500	600X450X500	800X450X500
Tray/Grid (mm)	440x320	585x320	785x320
Temperature (°C)	300c	300	300
Net Weight (kg)	39	49	63

Model	AT-937	AT-938	AT-936
Voltage (v)	220V	220V	220V
Power (w)	4000	2200	2200
Dimension (mm)	800X450X460	580X400X380	570X305X245
Net Weight (kg)	28	18	17

VEGETABLE SLICER



Vegetable cutter with standard 5 discs

- Rohs approval • 0.75HP motor
- Packing Dimensions : 570 x 310 x 690 mm
- Including : 2 mm slicing knife, 4 mm slicing knife, 8x8 mm slicing knife, 8x8 mm square strip, 8x8 mm cuber

VEGETABLE SLICER

Model	VS-550
Dimensions (mm)	560 x 290 x 560
Weight (kg)	22
Power (w)	550
Voltage (v)	230/50Hz/1PH



CREPE MACHINE/ROLLER GRILL



- packing dimensions: 530 x 500 x 260 mm
- round heater diameter: 400 mm
- Packing dimensions: 650 x 325 x 320 mm
- 5 Rollers, 200W each
- Rotational speed: 7 RPM

CREPE MACHINE

Model	DE-01
Dimensions (mm)	450 x 485 x 240
Weight (kg)	25
Power (w)	2800
Voltage (v)	220/50Hz/1PH

HOT DOG ROLLER

Model	HD-05
Dimensions (mm)	585 x 225 x 190
Weight (kg)	10
Power (w)	1000
Voltage (v)	120 - 220 /50-60Hz

POP CORN MACHINE



- Tempered glass
- High efficient heating system and warm storage system
- Pressed aluminum bowl to ensure the even heating for the high pop percentage.

POP CORN MACHINE

Model	EB-08A	EB-08B
Capacity	8 ounce	8 ounce
Voltage (v)	220	220
Power(w)	1300	1300
Dimension (mm)	520x380x670	520x380x670
Note	/	with trolley



ELECTRIC/GAS ROTISSERIE/SHAWARMA

SLICER / GRINDER



YXD-266/268/188



WYE-791



PE-2

- S/steel structure with compact design
- Heavy duty heating elements
- High efficiency
- Energy saving.

- S/steel structure with compact design;
- Heavy duty heating elements • High efficiency;
- **Energy saving.** *3 high efficient heating elements
- *each heater controlled separately
- * each heating element has 3 levels: 0.825kw / 1.65kw / 3.3kw



MS-SL220ES



IC-12

- Compact Design
- S/Steel Cutting blade
- Industrial high speed moto
- Easy operation
- Aluminium body with painting

- Multi function
- S/Steel body
- Industrial high speed motor
- low noise

ROTISSERIE

Model	YXD-266	YXD-268	YXD-188
Voltage (v)	220	220	LPG/NG
Power (kw)	4.7	6.21	0.13
Cooking Capacity	8-12pcs	12-16pcs	12-16pcs
Basket Qty	4pcs	4pcs	4PCS
Dimension (mm)	810X600X640	1030X670X800	1010x800x750

SLICER



Model	MS-SL220ES
Voltage (v)	220V/50Hz/1PH
Dimensions (mm)	450 x 280 x 320
Weight (kg)	13
Power (w)	120
Blade Diameter (mm)	220

SHAWARMA

Model	PE-2	WYE-791
Voltage (v)	380V	220V
Power (kw)	9.9	0.12
Rotary Speed	2.5R.P.M.	1 R.P.M.
Broiled meat size (mm)	dia: <400mm	dia: <400mm
Dimension	534x607x950	500x650x1100

GRINDER



Model	TC-12
Voltage (v)	220
Capacity	120 Kg/Hr
Motor Power (W)	650
Weight (kg)	33
Dimension (mm)	380x210x380

BONE SAW



GJ210/310

- Compact design
- Sturdy saw blade
- Automatic tensioning device easy to operate the tension adjustment knob, easy demolition
- Built-in safety and waterproof
- S/steel ring round the wheels to keep the blade clean during running.

CHOPPER

POWER :1.1KW/220V
SIZE:775X710X940MM



BONE SAW

Model	JG210	JG310
Power supply (v)	220v/50hz	220v/50hz
Power	0.65	1.1
Blade thick (mm)	0.5	0.5
Blade length (mm)	1650	2000
Cutting thick (mm)	5-155	5-180
Cutting height (mm)	<180	<260
Speed	1420rpm/min	1420rpm/min
Bench size (mm)	500x380	560x425
Dimension (mm)	520x470x820	590X570X1040
Weight (kg)	41	70

SAUSAGE FILLER

POWER:300W
SIZE:405X395X555MM

CAPACITY :7 LITR
SIZE:300X260X720MM



POTATO PEELER



MODEL : PP-15
VOLTAGE : 220/50Hz
POWER : 0.75 KW
CAPACITY : 15Kgs.
DIMENSION : 460x470x790MM
WEIGHT : 67kg

MODEL : PP-8
VOLTAGE : 220/50Hz
POWER : 0.37 KW
CAPACITY : 8Kgs.
DIMENSION : 430x430x725MM

Pizza Oven Double Deck



Wattage : 1300W x 2
Available in glass & staginess steels doors.
Bake 4 Pizzas of 9" at a time.

STONE BASE PIZZA OVEN



SBPO-2P / 3P



SBPO-101/102



SBPO-DD (Small) / (Big)

Model	Voltage (v)	Power (Kw)	Capacity	Stone Size (mm)	Chamber Size (mm)	Weight (kg)
SBPO-101	220	4.0	1 Deck	425x625x15	870x630x370	55
SBPO-102	220/440	7.0	1 Deck	850x625x15	1210x895x500	75
SBPO-DD (Small)	220	2.4	2 Deck	400x400x15	570x560x440	60
SBPO-DD (Big)	220	3	2 Deck	500x500x15	690x620x430	120
SBPO-2P	220	1.6	1 Deck	400x400x15	570x560x280	30
SBPO-3P	220	3	1 Deck	500x500x15	690x620x280	60

PIZZA CONVEYOR OVEN



Model	HX-1 / PO-1120	HX-1S
Voltage (v)	220	220
Power (kw)	6.3	6.7
Dimension (mm)	1080 / 1380 x 555 x 420	1080 / 1380 x 555 x 420
Working Area (mm)	560 x 385	560 x 385
Weight (kg)	47	49

- Compact design with s/steel structure
- Top and bottom heating elements
- With individual temperature control
- Easy handling for front or rear discharge.



Chocolate Warmers



Capacity	Wattage
1½ Ltrs.	300
3 Ltrs.	600
3½ Ltrs.	600
7 Ltrs.	1200
Choco Dip (2 Ltrs.)	600

Chocolate Fountains



Small

Power: 40w
Temp: 60°
Size: 16.5x28cm



Medium

Power: 80w
Temp: 60°
Size: 24x56cm



Big

Power: 100w
Temp: 60°
Size: 28x75cm



Professional

Power: 300w
Temp: 0-150°
Size: 37x60cm

Deep Fryers with Cabinets

MODEL	Electric Single	Electric Double	Gas Single
Specification	1 Tank	2 Tank	1 Tank
Cap. (ltr.)	16	16+16	18
Power	5 kw	5 kw + 5 kw	-
Voltage (V)	220	220	-
Size (mm)	340x530x940	340x530x945	342x585x1025



Electric Fryer
Single with cabinet



Electric Fryer
Double with cabinet



Gas Fryer
Single with cabinet

Pasta & Noodle Boiler



Power : 4 kw
Size : 600x465x280 mm
Baskets : 4

Nachos Warmer



Power : 300 w
Size : 405x395x555 mm

Ham Burger Warmer



Power : 2 kw / 220 v
Size : 406x670x290 mm

Hot Dog Machine



Power : 2.2 kw
Size : 590x405x510 mm
9 Rollers





Waffle Baker



RouRound
Power :1.2Kw
Size : 250x430x250mm



Square
Power :2.0Kw
Size : 450x350x280mm



Rotary (Round)
Power :1.5Kw
Size : 490x250x350mm

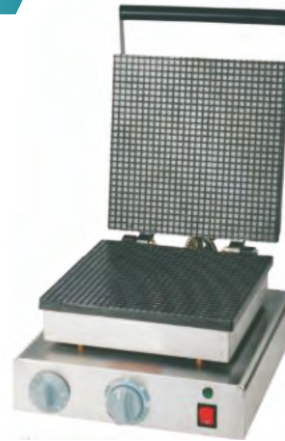


Rotary (Square, Digital)
Power :1.2Kw
Size : 430x360x290mm

Waffle Cone Baker



Round
Power :1.2Kw
Size : 250x430x250mm



Square
Power :1.8Kw
Size : 450x350x280mm

Drink Mixer

Power :400W
Size : 29.5x25.5x53mm



Salting Machine

Power :200W
Size : 900x460x950mm
With Two-Way Reverse Drum



Stick Blender

Power :500W
RPM : 9000
Length : 28"
Immersible Tube Length : 16"





Commercial Blender



TM 808
Power :1000Kw
RPM : 27000
Jar Capacity : 2Ltr



BL 1500B
Power :1500Kw
RPM : 32000
Jar Capacity : 2Ltr



CS 6600D
Power :2100Kw
RPM : 39000
Jar Capacity : 2Ltr



TM 788A
Jar Capacity : 1.5Ltr



TM 767
Jar Capacity : 2Ltr



TM 800A
Jar Capacity : 1.5Ltr



TM 800AQ
Jar Capacity : 1.5Ltr





Ice Crushers



Eco
Power :300w
Size : 325x200x300mm



Deluxe
Power :300w
Size : 390x290x340mm



Semi Deluxe
Power :250w
Size : 360x290x310mm

Ice Flaker



Deluxe
Power :180w
Productivity : 120Kg/hr.
Size : 500x400x850mm

Juicers



Citrus
Power :180w



Centrifugal
Power :800w

Sugarcane Juicer



Power : 750W
Size : 440x430x880mm

Momo Steamer



Power : 1500W
Size of pan : 34 cms
Layers : 2

Corn Steamer



Power : 4200w
Size of pan : 47 cms
Layers : 4



Popcorn Machines



Popcorn Showcase
Power :1.7w
Size : 900x420x760mm
Capacity : 8oz.



Popcorn Machine ECO
Power :1.3w
Size : 560x420x680mm
Capacity : 8oz.



Popcorn Machine Deluxe
Power :1.35w
Size : 560x420x770mm
Capacity : 8oz.



Popcorn Machine Deluxe- ECO
Power :1.35w
Size : 560x420x690mm
Capacity : 8oz.



Popcorn Machine (BIG)
Power :1.76w
Size : 635x545x850mm
Capacity : 12 oz.



Popcorn Machine (JUMBO)
Power : 2.3w
Size : 675x560x955mm
Capacity : 16 oz.



Popcorn Cart
(Only for 8 oz. Machines)

Candy Floss



Small
Power : 10.30Kw
Size : 520x520x500mm



Big
Power : 10.30Kw
Size : 720x720x500mm

Commercial Induction Ranges



Cooktop Size (Inch)	Model No.	Power in KW	Overall Dim (Inch)	Production Capacity
Small 16 x 24	KUBER IHP 167	7 KW-1 PH	20x20x12	For Medium Cooking
Medium 20 x 40	KUBER IHP 2010	10 KW-3 PH	22x42x32	For Heavy Cooking
Big 24 x 48	KUBER IHP 24125	12.5 KW-3PH	26x50x32	For Very Heavy Cooking

Useful for Roti / Phulka /Paratha / Dosa in Small Medium Bulk Quantity



Cooktop Size (Inch)	Model No.	Power in KW	Overall Dim (Inch)	Production Capacity
Small 12	KUBER ICT1235	3.5 KW-1 PH	14x14x10 Glass-12x12	Upto 15 Ltrs
Small 16	KUBER ICT1655	5.5 KW-1 PH	18x18x10 Glass-16x16	Upto 20 Ltrs
Medium 20	KUBER ICT207	7 KW-1 PH	24x24x20 Glass-20x20	Upto 65 Ltrs
Medium 24	KUBER ICT2410	10 KW-3 PH	28x28x20 Glass-16x16	Upto 85 Ltrs
Large 30	KUBER ICT3015	15 KW-3 PH	34x34x20 Glass-30x30	Upto 125 Ltrs

Useful for Roti / Phulka /Paratha / Dosa in Small Medium Bulk Quantity

Commercial Induction Ranges

Cooktop Size (Inch)	Model No.	Power in KW	Production Capacity
Small	KUBER PF 5	5 KW-1 PH	For Medium Cooking
Medium	KUBER PF 7	7 KW-1PH	For Heavy Cooking
Big	KUBER PF 10	10 KW-3PH	For Very Heavy Cooking

Useful for Phulka Roti



Induction Steamer



Steamer Size	Model No.	Power in KW	Production Capacity
Small	KUBER IHP 503560	3.5 KW-1 PH	Upto 60 Idlies
Small	KUBER IS 505100	5 KW-1 PH	Upto 100 Idlies
Medium	KUBER IS 637125	7 KW-1 PH	Upto 125 Idlies
Big	KUBER IS 6310180	10KW-3 PH	Upto 180 Idlies

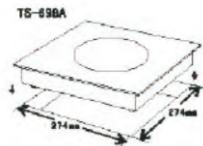
Useful for Idlies / Dhokla / Khaman & Other Ister

Induction Tawa (Round)

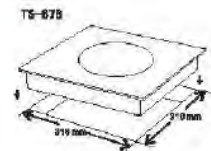


Tawa Size (Inch)	Model No.	Power in KW	Overall Dim (Inch)	Production Capacity
Small 24	KUBER IT 244	4 KW-1 PH	24x24x12	For Medium Cooking
Medium 32	KUBER IT 325	5 KW-1 PH	32x32x12	For Heavy Cooking
Big 36	KUBER IT 367	7 KW-1 PH	36x36x12	For Very Heavy Cooking

Useful for Paunbhaji / Dabeli / Tikki & Various Other Items



TS-698A
 Power : 2Kw
 Size: 274X274mm
 Size of Control Box : 128x42mm



TS-678
 Power : 2.2Kw
 Size: 316x316mm
 Size of Control Box : 128x42mm



TS-698A
 Power : 3.5Kw
 Size: 410x380x135mm



TS-3501
 Power : 3.5Kw
 Size: 410x380x95mm

Commercial Inductions



Power :3.5Kw
 Size: 420x330x100mm



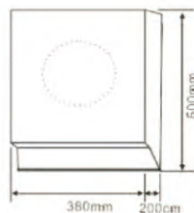
Power :3.5Kw
 Size: 420x330x100mm



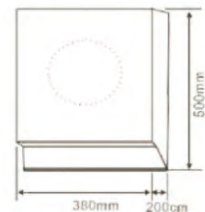
Power : 5Kw
 Size: 400x500x270mm



Power : 5Kw
 Size: 500x380x200mm



Power : 5Kw
 Size: 500x380x200mm








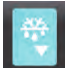
Thinking of you
Electrolux

Digital control

Quickly adjust temperature and defrost settings with a simple touch of a button.



Total control in only 4 buttons

- 
PRG/MUTE
 Set the service parameters or mute the audible alarm
- 
ON/OFF button "UP"
 To increase temperature
- 
SET
 Set internal cavity temperature and technical parameters
- 
MANUAL DEFROST
 Activates the defrost cycle "DOWN"
 To decrease temperature



Product code	790132	790133	790128	790129	790134	790135	790130	790131
External* / internal panels in AISI	304	304	304	304	304	304	304	304
Operating temperature at 43°C	-2/10	-22/-15	-2/10	-22/-15	-2/10	-22/-15	-2/10	-22/-15
Gross Capacity - lt	600	600	600	600	1300	1300	1300	1300
External dimensions - mm (wxdxh)	720x788x2000	720x788x2000	720x788x2000	720x788x2000	1440x788x2000	1440x788x2000	1440x788x2000	1440x788x2000
N° and type of grids (included)	3, GN 2/1	3, GN 2/1	4, GN 2/1	4, GN 2/1	6, GN 2/1	6, GN 2/1	8, GN 2/1	8, GN 2/1
Refrigeration type	R404a	R404a	R404a	R404a	R404a	R404a	R404a	R404a
Voltage/Phases/Frequency**	230/1/50	230/1/50	230/1/50	230/1/50	230/1/50	230/1/50	230/1/50	230/1/50



Tilting Braising Pan



Tilting Boiling Cooker



Vegetable Cutter



Two / Four Door



GN600TNM
GN600BTM

GN1200TNM
GN1200BTM

Single / Double Door



GN600TN
GN600BT

GN1200TN
GN1200BT

Standard front panel with digital temperature display and door locks.



The cabinet can be supplied either with adjustable feet or lockable castors.



The sealing strip on the door keeps the cold air in the cabinet. For cleaning, it without the use of tools. Simple and hygienic.



Door will remain open at less than 90° opened the door will close automatically.



UNDER COUNTER
FREEZER/REFRIGERATOR



GN2100TN / GN2100BT

GN3100TN / GN3100BT

UNDER COUNTER
GLASS DOOR REFRIGERATOR



GN2100TNG

GN3100TNG



PIZZA PREP. COUNTER



SALADETTES



Product	Model	Dimensions WxDxH (mm)	Capacity (Ltrs.)	Temperature (°C)	Power Supply	Power Consume (KWh/24h)	Design (GN Compatibility)	No. Doors	No. of Shelves	Refrigerant	Weight (Kg.)
Reach-in Refrigerators	GN1200TNM	1340x810x2010	1200	-2 ~ +8°C	230V/50HZ	4.8	2 x GN 1/1	4	6	R134a	180
	GN1200TN	1340x810x2010	1200	-2 ~ +8°C	230V/50HZ	4.8	2 x GN 1/1	2	6	R134a	180
	GN600TNM	680x810x2010	600	-2 ~ +8°C	230V/50HZ	2.9	2 x GN 1/1	2	3	R134a	137
	GN600TM	680x810x2010	600	-2 ~ +8°C	230V/50HZ	2.9	2 x GN 1/1	1	3	R134a	135
Reach-in Freezers	GN1200BTM	1340x810x2010	1200	-18 ~ -22°C	230V/50HZ	9.6	2 x GN 1/1	4	6	R134a	182
	GN1200BT	1340x810x2010	1200	-18 ~ -22°C	230V/50HZ	9.6	2 x GN 1/1	2	6	R134a	182
	GN600BTM	680x810x2010	600	-18 ~ -22°C	230V/50HZ	8.8	2 x GN 1/1	2	3	R134a	138
	GN600BT	680x810x2010	600	-18 ~ -22°C	230V/50HZ	8.8	2 x GN 1/1	1	3	R134a	136
Under Counter Refrigerators	GN2100TN	1360x700x850	282	2 ~ +8°C	230V/50HZ	2.0	1 x GN 1/1	2	2	R134a	98
	GN3100TN	1795x700x850	417	2 ~ +8°C	230V/50HZ	2.4	1 x GN 1/1	3	3	R134a	134
Under Counter Freezers	GN2100BT	1360x700x850	282	-10 ~ -20°C	230V/50HZ	8.0	1 x GN 1/1	2	2	R404a	103
	GN3100BT	1795x700x850	417	-10 ~ -20°C	230V/50HZ	7.0	1 x GN 1/1	3	3	R404a	136
Under Counter Glass Door Refrigerators	GN2100TNG	1360x700x850	282	2 ~ +8°C	230V/50HZ	2.0	1 x GN 1/1	2	2	R134a	100
	GN3100TNG	1795x700x850	417	2 ~ +8°C	230V/50HZ	2.4	1 x GN 1/1	3	3	R134a	137
Saladettes	S900	900x700x850	240	2~+8°C	230V/50HZ	3.0	10 x GN 1/4	2	2	R134a	70
	S903	1365x700x850	240	2~+8°C	230V/50HZ	3.8	10 x GN 1/4	3	3	R134a	108
Pizza Prep Counter	SH2000/800	1510x800x1050	1150	2~+8°C	230V/50HZ	3.3	6 x GN 1/3	2	2	R134a	140
	SH3000/800	2020x800x1050	1150	2~+8°C	230V/50HZ	3.6	10 x GN 1/3	3	3	R134a	164
	PA3100TN	2020x800x850	580	2~+8°C	230V/50HZ	2.9	-----	3	3	R134a	152

Product	Model	Dimensions WxDxH (mm)	Capacity (Ltrs.)	Temperature (°C)	Power Supply	Power Consume (KWh/24h)	Type of Cooling System	No. Doors	No. of Shelves	Refrigerant	Ambient Temperature
Reach-in Refrigerators	R 2L	700x800x2000	550	-2~+10°C	230V/50HZ	430	Static	2	3	R134a	Tropical Climate
	F 2L	700x800x2000	550	-18~-22°C	230V/50HZ	620	Static	2	3	R404a	Tropical Climate
	R 4L	1220x800x2000	1100	-2~+10°C	230V/50HZ	504	Static	4	6	R134a	Tropical Climate
	F 4L	1220x800x2000	1100	-18~-22°C	230V/50HZ	678	Static	4	6	R404a	Tropical Climate
	WR 15	1500x750x850	330	-2~+10°C	230V/50HZ	339	Static	2	2	R134a	Tropical Climate
	WF 15	1500x750x850	330	-18~-22°C	230V/50HZ	520	Static	2	2	R404a	Tropical Climate
	WR 18	1800x750x850	430	-2~+10°C	230V/50HZ	339	Static	3	3	R134a	Tropical Climate
	WF 18	1800x750x850	430	-18~-22°C	230V/50HZ	678	Static	3	3	R404a	Tropical Climate